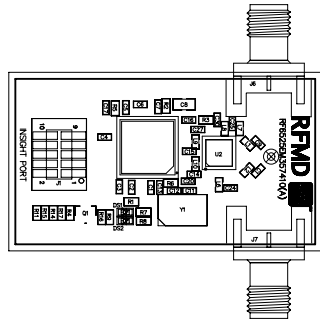


NOTES :


- 1 WORKMANSHIP & SOLDER PER IPC-A-610C, CLASS 2.
- 2 FOR FURTHER INSTRUCTION ON ASSEMBLY CHECK NOTES ON BILL OF MATERIAL.

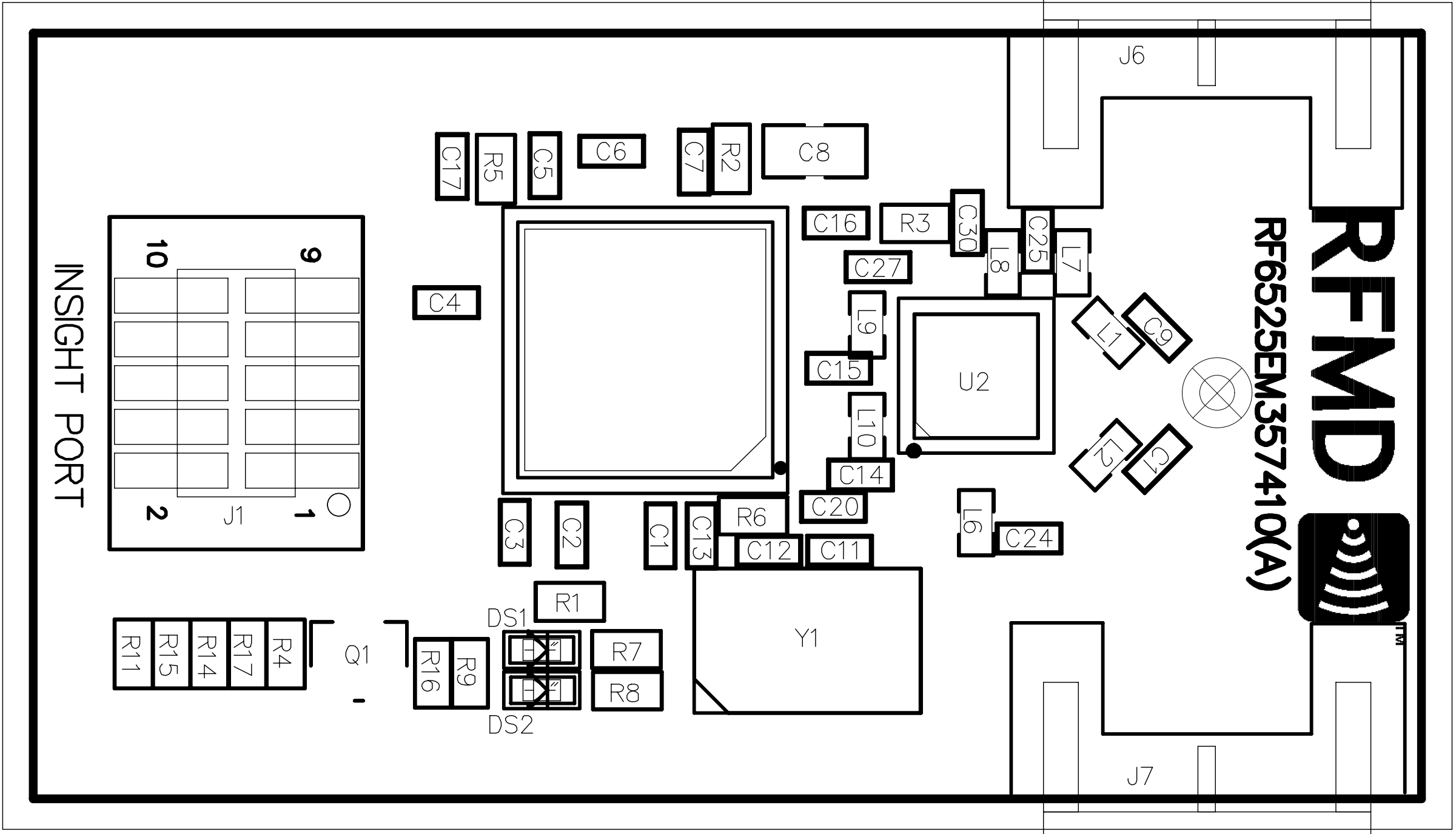
CONTACTS	PCB DESIGN	Michael Coolen	PH: 978-670-2246	mcoolen@r fmd.com
	ENGINEERING	Eric Posey	PH: 336-678-5123	eposey@r fmd.com



RF6525EM357410(A) Silkscreen Top

RF6525EM357410(A) Assembly Top
RF6525EM357410(A) Board Outline

RFMD  7628 Thorndike Road Greensboro, NC 27409 Phone: 336-664-1233	FAMILY P/N: RF6525EM357		REV: A
	TITLE: RF6525EM357 Evaluation PCB		
	PCB PART NO: RF6525EM357410		
DATE: 02/24/10	DOC NO: RF6525EM357470		
ALL DIMENSIONS IN INCHES UNLESS OTHERWISE SPECIFIED	SIZE: B	SCALE: DO NOT SCALE	PAGE: 1 OF 2



RFMD
RF6525EM357410(A)



IN-SIGHT PORT

1 2 3 4 5 6

A

A

B

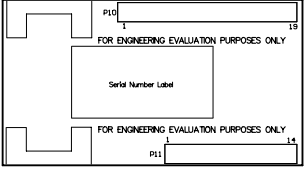
B

C


C

D

D



RF6525EM357410(A) Board Outline
 RF6525EM357410(A) Silkscreen Bottom

RFMD  7628 Thorndike Road Greensboro, NC 27409 Phone: 336-664-1233	FAMILY P/N: RF6525EM357	
	TITLE: RF6525EM357 EVALUATION PCB	
	PCB PART NO: RF6525EM357410	
DATE: 02/24/10	DOC NO: RF6525EM357470	REV: A
ALL DIMENSIONS IN INCHES UNLESS OTHERWISE SPECIFIED	SIZE: B	SCALE: DO NOT SCALE
	PAGE: 2 OF 2	

1 2 3 4 5 6

P10

1

19

FOR ENGINEERING EVALUATION PURPOSES ONLY

Serial Number Label

FOR ENGINEERING EVALUATION PURPOSES ONLY

P11

1

14